

# EcoTrim - ML

AI-powered trim optimization tool

*Tailored to any vessel in 7 days*

*Optimize Your Trim.  
Maximize Your Profits.*



# Ships often operate at non-optimal trim conditions

This leads to:



## Loss of Savings

Even slight trim inefficiencies can raise fuel use by 1–3% per voyage, costing thousands daily.



## Revenue Loss from CO<sub>2</sub> Emissions

Extra fuel burned directly increases CO<sub>2</sub> output, making compliance with IMO targets harder.



## Low Profits

Rising bunker prices mean inefficiency quickly eats into profit margins and competitiveness.

*Smarter efficiency through AI is key to meeting regulatory and environmental challenges.*



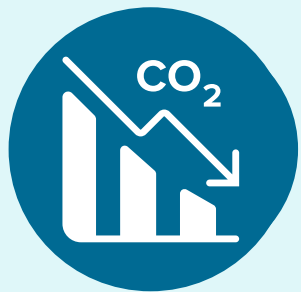


# EcoTrim-ML

## Key Benefits for Your Vessel



Save on fuel costs: *Optimize vessel trim to save fuel and lower costs.*



Profit from Green Efficiency: *Reduce emissions in a way that protects both the environment and your bottom line.*



Fast & Efficient: *Quick to deploy and easy to use, EcoTrim's AI ensures immediate cost and emission savings.*





Selected Speed: 12.0 knots | Mean Draft: 8.3 m

# How it works?

Smarter Trim, Smarter Shipping

**Data-Driven Learning**

*EcoTrim-ML is powered by AI and machine learning, trained on the vessel's own historical operational data.*

**No Expensive CFD**

*Instead of costly and time-consuming CFD simulations, the model learns directly from real fuel consumption patterns under actual operating conditions.*

**Vessel-Specific Accuracy**

*Because the system is trained on each vessel's unique data, results are practical, highly reliable, and tailored to the ship.*

**Continuous Improvement**

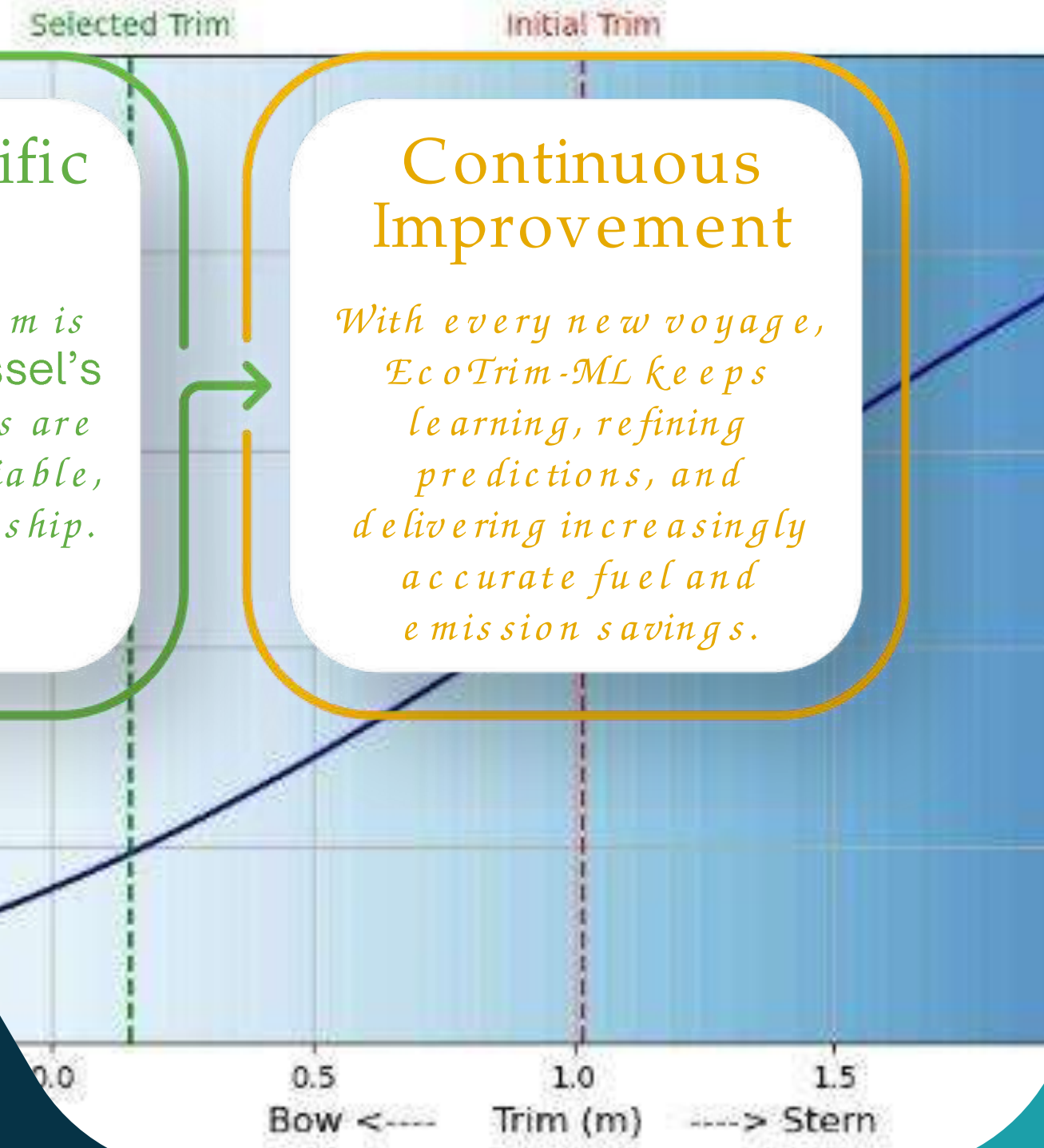
*With every new voyage, EcoTrim-ML keeps learning, refining predictions, and delivering increasingly accurate fuel and emission savings.*

**Vessel Inputs:**

- Ship Speed Range
- Mean Draft Range
- Bunker Rates

**Outputs:**

- Predicted Power (kW) curve
- Optimal trim recommendation
- Fuel & CO<sub>2</sub> saving potential



# Example



Speed (knots) 9.0 | 15.0 | Mean Draft (m) 6.0 | 10.0

Selected Speed: 12.0 knots | Mean Draft: 8.3 m

Speed: 12 knots | Mean Draft: 8.3m

Initial Trim: 1.02 m

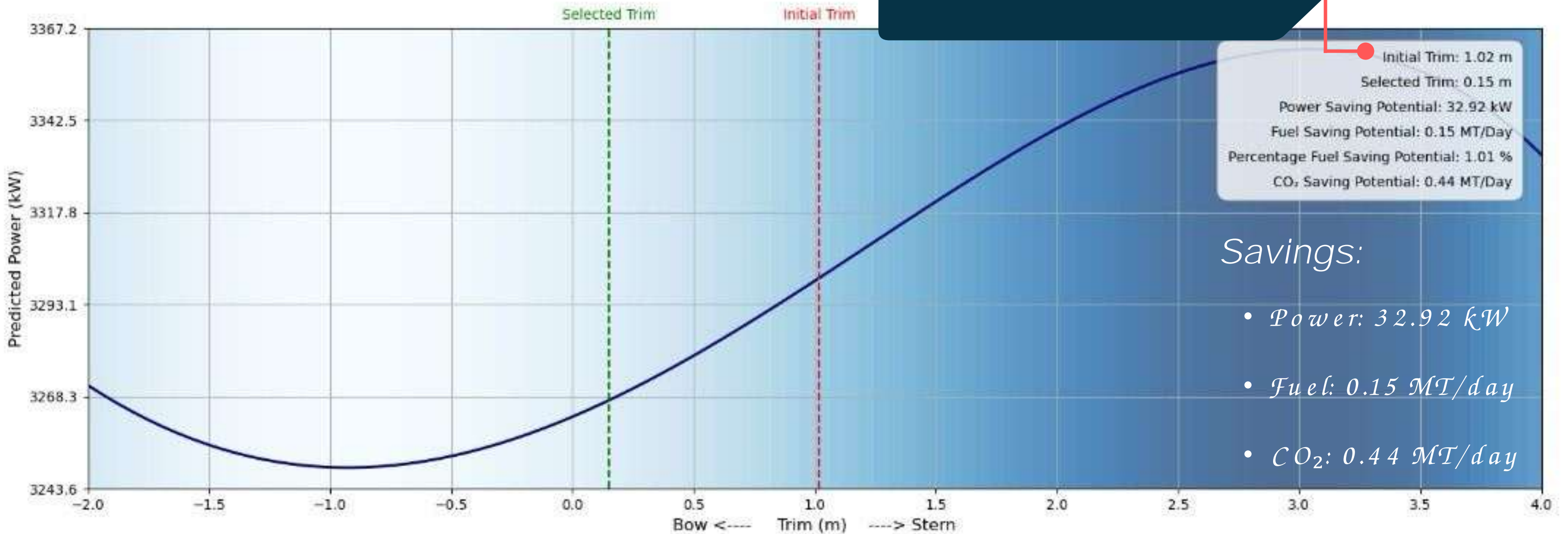
Selected Trim: 0.15 m

Power Saving Potential: 32.92 kW

Fuel Saving Potential: 0.15 MT/Day

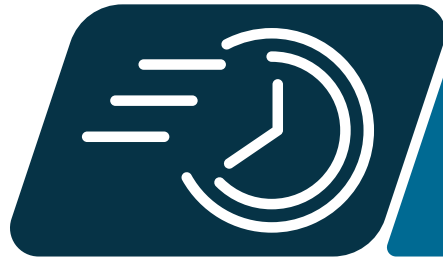
% Fuel Saving Potential: 1.01%

CO<sub>2</sub> Saving Potential: 0.44 MT/Day





# Why EcoTrim is Different



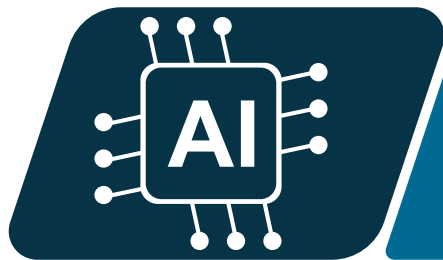
Quick & efficient -  
*No extensive CFD required.*



Profitable -  
*Only a fraction of the market rate*



*1 Week to Full Deployment*



*Driven by the latest ML & AI technology  
for maximize efficiency & savings*



# Let's get started

## What we need from you:



Minimum of 3 years' Noon Report data (5 years preferred)



Sea Trial Report, including Speed–Power Curve



Main Engine (ME) Shop Test Report

If historical data for 5 years is unavailable, requirements can be discussed on a case-by-case basis.



# Contact us

